



**Dominique Lapointe, CFA**  
Global Macro Strategist  
Multi-Asset Solutions Team



**Erica Camilleri, CFA**  
Senior Global Macro Analyst  
Multi-Asset Solutions Team

Last week saw major developments in the central banking world, with the U.S. Federal Reserve (Fed) and the Bank of Japan (BoJ) delivering interest-rate decisions that shook global markets. Our Macroeconomic Strategy Team provides its latest analysis and outlook, with key factors that warrant investors' attention ahead of the Fed & BoJ's next policy meetings in September.

## Assessing the central banks' trajectory as rate paths shift

### As the labor market cracks, the Fed is becoming sensitive to “both sides of the mandate”

Since pausing its rate-hiking cycle in July 2023, the Fed has taken methodical steps towards policy easing. The need to gain “enough confidence” that inflation was sustainably returning to the 2% target was seen as an anchor that would secure the beginning of the easing cycle.

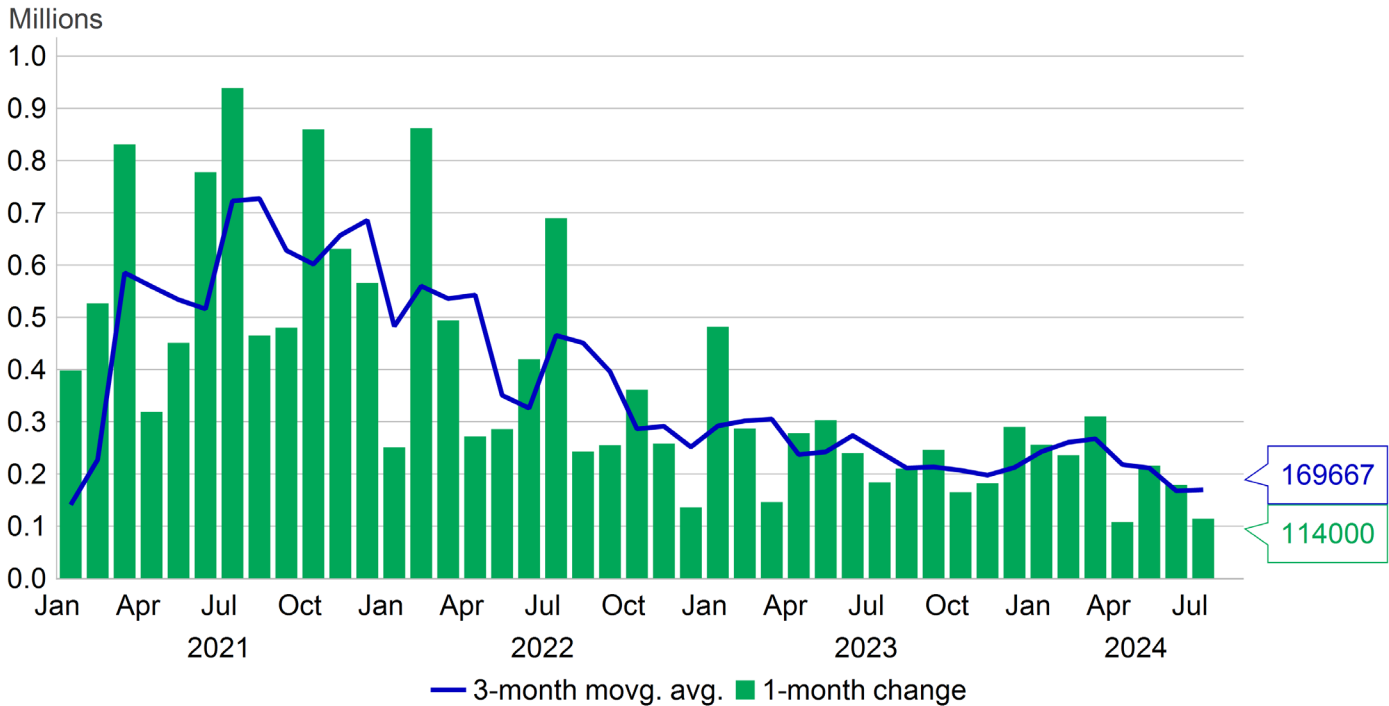
Importantly, the Fed had the luxury of time: the economy overperformed in 2023 and has held on relatively well in the first half of this year. Thus, when inflation surprised to the upside in the first quarter of 2024, the US central bank was able to delay the timing of its first rate cut without allegedly threatening economic activity and full employment.

With disinflation returning in Q2 2024, the Federal Open Market Committee (FOMC) grew confident that it could resume its measured steps towards easing. This was indicated at its July press conference (and in the corresponding statement) by setting the scene for a September cut and emphasizing attention to “both sides of the mandate” – *i.e. price stability and full employment.*

### For the markets, bad data upends the Fed's methodical narrative

Needless to say, the data released since then has jeopardized the Fed's sanguine view about the U.S. economy. First, the **ISM Manufacturing report** for July contracted at its fastest rate since November 2023, with new orders (47.4) and employment (43.4) showing ominous signals for future economic activity. Second, July's jobs report confirmed what we've been expecting: lower hiring rates, as indicated by the **JOLTS survey**, and rising **initial jobless claims** are translating into weaker payroll growth. At +114K, job gains came in significantly below the +175K consensus. Moreover, the fact that payrolls grew by only +40K, after excluding health, education, and government workers, is concerning as it means that **industry private sector hiring came dangerously close to a net loss**. Third, the labor force in the household survey grew by a staggering +420K, and only +67K of them got a new job. This boosted the unemployment rate to 4.3%, which is 0.3 percentage points above the Fed's latest forecast.

**Chart 1: Payroll growth slows in the U.S.**



Source: BLS, Macrobond, Manulife Investment Management, as of August 7, 2024.

## For now, we stick to our forecast of three rate cuts in 2024

Markets quickly replaced the “risk management” introduced by the Fed on July 31<sup>st</sup> with a sense of urgency to ease. Bonds rallied violently following the jobs report, and the yield curve almost completely un-inverted itself. This is the usual pattern when a cutting cycle is imminent.

Analysts are openly questioning whether the Fed’s decision to hold rates steady in July was a mistake. Many economists are now forecasting one or multiple 50 basis point rate cuts by the Fed this year, starting in September. Our view is more sanguine: the labor market shows signs of cracking but is not yet collapsing. Consumption is holding up as real wages are positive, and business investment continues to be strong. While we still anticipate a significant economic slowdown, our forecast is consistent with a steady pace of 25 basis point cuts, not a knee-jerk reaction to selected data points.

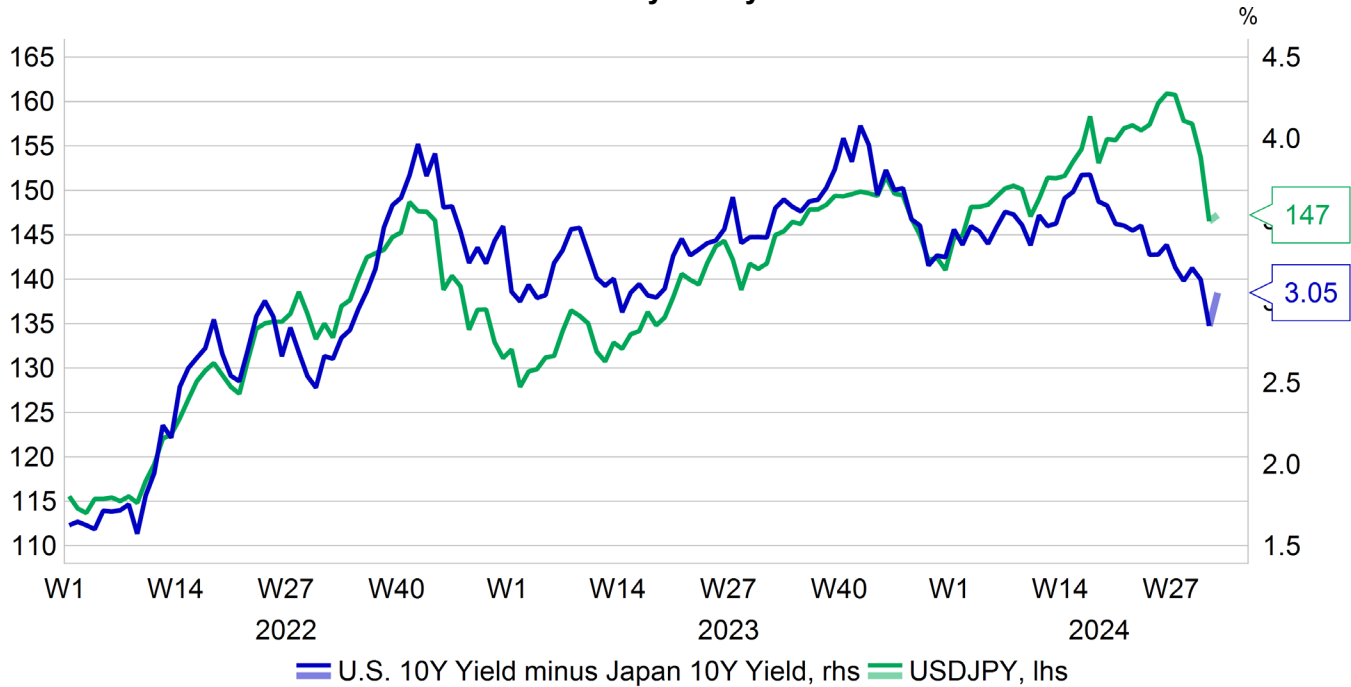
Having said that, we will closely monitor the data over the coming weeks to assess if the U.S. economy needs a faster pace of easing and if the Fed is willing to deliver it. Admittedly, additional signs of consumer retracement, as well as a jump in layoffs or unemployment claims, would support the notion

that the U.S. economy is cooling in a more disorganized manner than we expected, which would require a stronger pace of easing. On the other hand, after the initial shock, some stabilization in economic data such as the ISM services index, combined with supportive Fed’s communication, could lead markets to price-out the excessive easing for 2024.

## The BoJ hiking cycle is an outlier against the global easing cycle

On July 31<sup>st</sup>, the BoJ raised its policy rate by 15 basis points to 0.25%, marking the second hike in this cycle after exiting its long-standing negative interest rate policy (NIRP) in March 2024. The hike was a surprise to markets as only 30% of economists and just 50% of market participants were expecting the move. Forward guidance on the policy rate path reads hawkish by outlining that real rates are too low and higher rates will have a limited economic impact. This implies that the BoJ is committed to raising rates further and normalizing policy to a still undetermined neutral level. While the long-awaited BoJ’s quantitative-easing (QE) reduction plan was less aggressive than anticipated, the hawkish policy-rate path boosted the Japanese yen exchange rate versus the US dollar (see chart below). Evidence of

**Chart 2: Interest rate differentials have driven the yen rally**



Source: Bloomberg, Macrobond, Manulife Investment Management, as of August 7, 2024.

the unwinding of multi-year “carry trades” involving the Japanese yen will likely reinforce the foreign exchange movements, with the Yen trading at its highest level since the end of 2023 against the U.S. dollar.

Earlier this year, we materially revised our forecast for the BoJ policy rate higher. After last week’s meeting, we might have to do so again. There is a rising probability that the BoJ will hike once more in 2024 and twice in 2025 (in 25 basis point increments). Accordingly, we now see a terminal rate for 2026 of 1.0% and expect at least two more hikes in 2025.

While global central banks are in an easing cycle, Japan stands out as a clear outlier. Remember that in 2022 and 2023, when most major central banks were aggressively hiking interest rates at the fastest pace in decades, the BoJ maintained its NIRP. The BoJ can hike because it is confident that inflation will be sustainably above target due to wage growth.

However, the BoJ is not necessarily attempting to tighten the economy. Also, given the unintended consequences of NIRP, the BoJ is using policy to influence its domestic financial system and raise rates to a ‘normal’ level.

We are more hawkish than consensus on the BoJ and, as such, see relative value opportunities: Japanese government bond yields should continue to move higher as markets increase their expectations for further rate hikes. In turn, interest rate differentials should support the yen, which now faces greater technical support. A positive policy backdrop and corporate reforms should be a tailwind for Japanese equities, but we believe that yen appreciation will likely temper some outperformance of the asset class, while also adding to volatility.

## Disclaimer

Manulife Investment Management is the global wealth and asset management segment of Manulife Financial Corporation. The information and/or analysis contained in this material have been compiled or arrived at from sources believed to be reliable but Manulife Investment Management does not make any representation as to their accuracy, correctness, usefulness or completeness and does not accept liability for any loss arising from the use hereof or the information and/or analysis contained herein. Neither Manulife Investment Management or its affiliates, nor any of their directors, officers or employees shall assume any liability or responsibility for any direct or indirect loss or damage or any other consequence of any person acting or not acting in reliance on the information contained herein.

This material was prepared solely for educational and informational purposes and does not constitute a recommendation, professional advice, an offer, solicitation or an invitation by or on behalf of Manulife Investment Management to any person to buy or sell any security. Nothing in this material constitutes investment, legal, accounting or tax advice, or a representation that any investment or strategy is suitable or appropriate to your individual circumstances, or otherwise constitutes a personal recommendation to you. The economic trend analysis expressed in this material does not indicate any future investment performance result. This material was produced by and the opinions expressed are those of Manulife Investment Management as of the date of this publication, and are subject to change based on market and other conditions. Past performance is not an indication of future results. Investment involves risk, including the loss of principal. In considering any investment, if you are in doubt on the action to be taken, you should consult professional advisers.

Proprietary Information – Please note that this material must not be wholly or partially reproduced, distributed, circulated, disseminated, published or disclosed, in any form and for any purpose, to any third party without prior approval from Manulife Investment Management.

These materials have not been reviewed by, are not registered with any securities or other regulatory authority, and may, where appropriate, be distributed by the following Manulife entities in their respective jurisdictions.

**Indonesia:** PT Manulife Aset Manajemen Indonesia. **Malaysia:** Manulife Investment Management (M) Berhad Registration No: 200801033087 (834424-U). **Singapore:** Manulife Investment Management (Singapore) Pte. Ltd. (Company Registration Number: 200709952G). **Vietnam:** Manulife Investment Fund Management (Vietnam) Company Limited. **Australia, South Korea and Hong Kong:** Manulife Investment Management (Hong Kong) Limited. **Philippines:** Manulife Investment Management and Trust Corporation. **Japan:** Manulife Investment Management (Japan) Limited. **Taiwan:** Manulife Investment Management (Taiwan) Co., Ltd. (Investment is not protected by deposit insurance, insurance guaranty fund or other protection mechanism in Taiwan. For the disputes resulted from the investment, you may file a complaint to the Securities Investment Trust & Consulting Association of the R.O.C. or Financial Ombudsman Institution. License No. 110 Jin-Guan-Cheng-Tou-Xin-001 "Independently operated by Manulife Investment Management (Taiwan) Co., Ltd." /3F., No.97, Songren Rd., Taipei, Taiwan 11073, Tel: (02)2757-5999, Customer Service: 0800-070-998.)